

# Community Engagement Strategy



The purpose of the CE strategy is to set out a set of principles and standards for how BCP Council will engage and consult with its Community. **Emerging principles:**



**1**

**Involved communities**

We are **passionate** about our communities

We will strengthen local democracy and decision-making processes to ensure participation is inclusive for all sectors of our community.



**2**

**Inclusive communities**

We treat everyone with **respect**

We will champion inclusive communities and work with our partners, including the voluntary sector, to make this happen. We will use the best, most appropriate methods to engage with our residents, businesses and visitors.

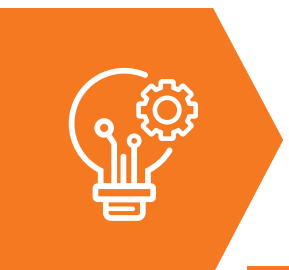


**3**

**Transparent with our communities**

We have **integrity**

We will strive to engage and consult with our community in ways that work for them. We will share outcomes of engagement activity and responses will influence our decision making. We will admit when we make mistakes.



**4**

**Keeping it simple for our Communities**

We embrace **innovation**

We will use plain English in our communication materials. We will strive to make our engagement interesting, relevant and to the point. We will keep up with digital technology to keep you informed.



**5**

**Collaborative Communities**

We take **pride** in what we do

We will work with our communities to develop plans to address issues such as the climate emergency. We will work to ensure everyone knows what their role is so that we can all take pride in making a difference.